

## COMPASS Forum Report

Prepared by Broken Hill Art Exchange Incorporated



Broken Hill University Department of  
Rural Health



# COMPASS Forum Report

## INTRODUCTION

- Guest speaker Profiles
- Resources and Community Consultation Methods
- COMPASS Forum: Time, Dates & Venues

## PART A

### COMPASS FORUM: DAY 1

1. Attendance
2. Sector Attendance
3. Questionnaire Responses
  - 3.1 Please describe any common ideas/synergies between the different presentations, sectors, and/or your own interests?
  - 3.2 COMPASS Residencies
    - 3.2 (a) How could the COMPASS residencies &/or projects presented support your ideas
    - 3.2 (b) Participants were further asked if they would like to be contacted regarding the COMPASS residencies.
  - 3.3 Future development
    - 3.3 (a) How could the COMPASS residencies &/or projects presented support your ideas?
    - 3.3 (b) Participants were further asked 'what would further develop these opportunities' in regard to the four areas above.
  - 3.4 Participants were asked if they found COMPASS useful
  - 3.5 Final Comments
4. Summary
  - 4.1 Questionnaire
  - 4.2 Name Cards
  - 4.3 Respondents written ideas
    - 4.3 (a) Respondent ID No: 27
    - 4.3 (b) Respondent ID No: 20
    - 4.3 (c) Anonymous
  - 4.4 Group Creative Thinking/Brainstorming  
Ideas, opportunities, issues

## **PART B**

### **COMPASS FORUM: DAY 2**

1. Community Meetings
2. Itinerary and Attendances
3. Activities
  - a) Community Sessions
  - b) Other sessions
  - c) City Induction Tour

### **PART C: Final Summary, outcomes and recommendations**

Acknowledgements

Appendices

## **Introduction**

The COMPASS Forum was a two-day event involving visiting and local representatives. The aim of the forum was to bring representatives from the different sectors of Art, Health, Industry/Education and the broader community together to develop a shared vision for economic, social, cultural and environmental sustainability in Broken Hill.

There were nine presenters, of which four were visiting from Sydney and five were local residents. The representatives were from different industry sectors, including Health, Education, Art and local Governance. Each representative made a 15 -20 minute presentation relating to their sectors current or potential projects in relation to the city of Broken Hill. The public was invited to comment about the presentations and to identify any common synergies or links between the presentations or in regard to their own aspirations for developing Broken Hill as a whole.

The forum provided the speakers with the opportunity to gain insight into the needs, wants, capacity and expectations of the Broken Hill Community together with the strengths of their projects and the project aims of other sectors. The forum provided the visiting representatives with the opportunity to progress their interests in the city by consulting with the local community and representatives from different sectors.

The guest speakers included visiting representatives Bonita Ely, Environmental Research Institute of Arts, UNSW COFA, Cathy Yeh, Imaging the Land International Research Initiative, UNSW COFA, David Cranswick, Director, D/Lux Media Arts and Elisabeth Burke, Continuing Education UNSW. The local delegates included Susan Thomas, Broken Hill Art Exchange Inc., Robert Sidford and John Harris on behalf of Health 1 Project, John Harris, Community Liaison Maari Ma Aboriginal Health, Naomi Waldron, Broken Hill City Council Environmental Services, Katrina Gepp Department of Primary Industry, Minerals and Mining, and Deb Jones, Sydney University Department of Rural and Remote Health.

## **GUEST SPEAKERS PROFILES**

### Visiting Delegates

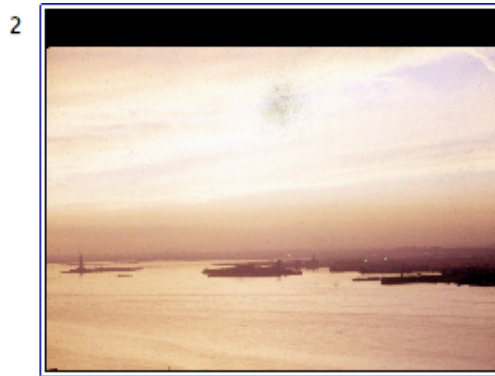
#### **Bonita Ely, ERIA, UNSW COFA**

Title: Environmental Research in Visual Arts Practice

Description: The presentation described the activities of the Environmental Research Initiative for the Arts, located at the College of Fine Arts Sculpture Department, at the University of New South Wales. ERIA is in partnership with various institutions to research ways that both the process of fabricating art can be environmentally sustainable, and the role of art in signalling awareness and insights about environmental issues. Much of the former research will have applications in small industry, telecommunications and the interface of physical objects with electronic communications.



Slide 1



Slide 2



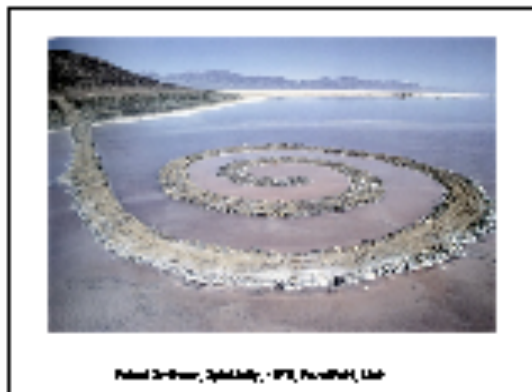
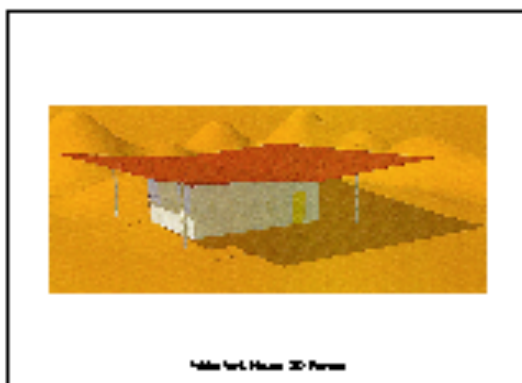
Slide 5



Slide 6

## Kathy Yeh, ILIRI, UNSW COFA

Represented Louise Fowler-Smith, director at the Imaging the Land International Research Initiative (ILIRI) at the College of Fine Arts, University of New South Wales. As a formalization of COFA's 15-year interest and involvement with Fowler's Gap and Broken Hill, the Imaging the Land International Research Initiative or ILIRI, was established in 2003. Central to this vision is the creation of opportunities for artists to work in the Australian desert. One of ILIRI's aims is to encourage dialogue across a wide spectrum of approaches to imaging the land in art; a dialogue composed not only of words, but also of enduring artworks. An overview of ILIRI's work starting with an outline and a brief history of ILIRI and its association with Fowler's Gap Research Station was presented as well as an outline of Land Art, past and present was related to the ILIRI project, *The Water Tank House*. This project is being built to forge a better and stronger relationship with the city of Broken Hill. The field trips that ILIRI conducts to Fowler's Gap and the proposed changes in structure



### Water Tank House 3...



were presented.

## **David Cranswick, D/Lux Media Arts**

Director of d/Lux Media Arts presented current projects by the organisation including the GPS based game called Razorhurst. Razorhurst is about Darlinghurst in the 1920s and 30s was ground zero in a gang war over illegal alcohol, known as sly grog. Some of the most terrifying criminals in Australian history rioted with cutthroat Razors earning the zone the infamous title Razorhurst and Razorhurst has been resurrected as an exciting game using GPS. The game interface combines video re-enactments with archival photos, animation, maps, ambient sound and voiceovers. The player's movements are tracked by satellite and dynamically updated in the virtual world of Razorhurst.

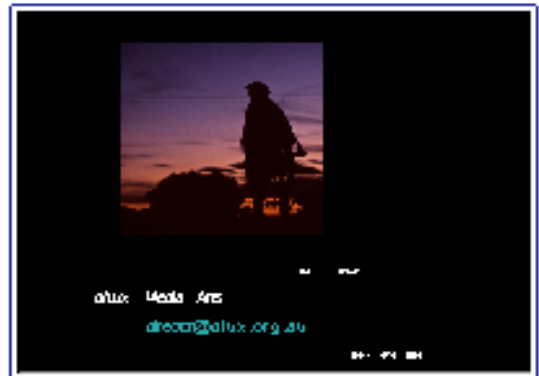
The GPS devices were collected from the East Village Hotel (formerly the Tradesman's Arms) in Darlinghurst. From this central location players venture to destinations marked on their map to collect bottles for return at the Tradesman's Arms. En route they encounter gangsters and other characters from the world of Razorhurst triggered by their location. The interface displays the player's position on the map, time remaining, game statistics and messages. Razorhurst is evoked through photos, video, music and sound. The presentation also discussed new initiatives in art, the organisation's previous engagement with Broken Hill and the artists they have sent to the region. D/Lux Media Arts see GPS enabled devices as a significant emerging media platform, capable of delivering rich screen content including video, audio and animation to a broad audience base.

David Cranswick, D/Lux Media Arts



Slide 25

26



Slide 26



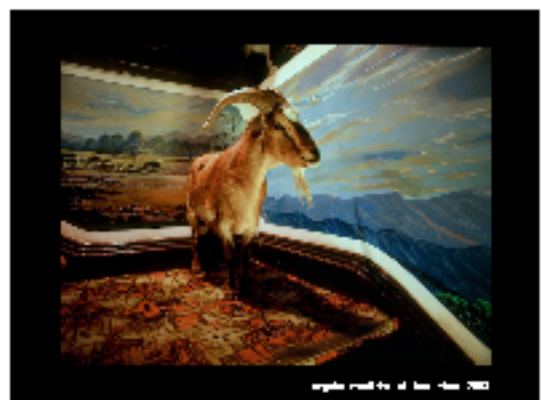
Slide 20



Slide 6



Slide 24

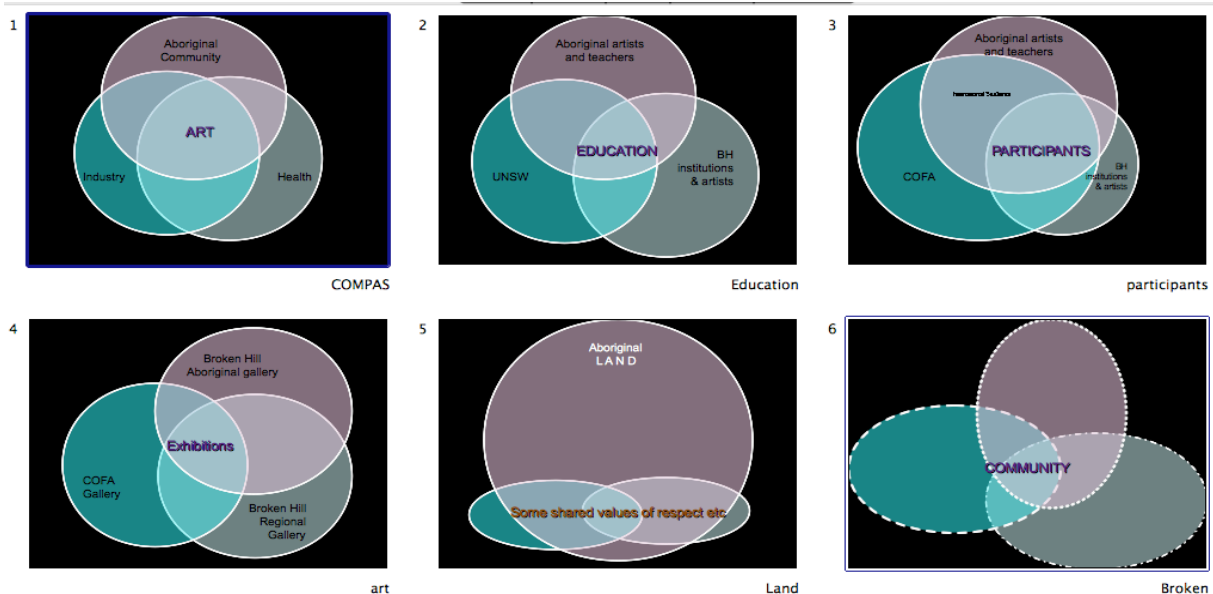


PowerPoint Presentation



## Elisabeth Burke, Continuing Education, UNSW


The Co-coordinator of the COFA Continuing Education presented the idea of including local Aboriginal artists in both research and teaching. Together with COFA academics and artists they would develop and deliver a new program of art and design courses. Over, say, a 5-year period, different disciplines could be developed and delivered, including painting, drawing, ceramics, textiles and media arts. The project would develop research and teaching teams involving both Aboriginal and non-Indigenous participants and could include exhibitions at both Broken Hill and COFA. Aboriginal people have their identity embedded in the land and willingly share non-protected, intellectual and practical knowledge. COFA has strengths in academic research (including a site at Fowlers Gap), critical thinking and practical art and design skills. The common link between COFA and Broken Hill could be the exchange of educational and creative opportunities and resources. A benefit of initiating this program is that the University has experience with curriculum development and associated logistics. The participants in the program could include local, national and international artists and students. The development of the program assumes that art and design would be critical elements of a wider cultural policy in the area. An idea towards a cultural policy is that Broken Hill reforge its identity in the shared experience of 'broken cultures'.



## Local Delegates

**Deb Jones, University of Sydney, Department of Rural and Remote Health**

The presentation included Primary Health Care Models and examples of new initiatives in health education. Inclusive new initiatives such as the Nursing Academies for the health young people and the undergraduate Speech Pathology Program were discussed. A description of what constitutes an inclusive program together with the benefits and challenges of working together were outlined. The models presented were initiatives aimed at creating greater education pathways by building partnerships around projects. In so doing, the needs of different stakeholders could be met while at the same time developing a shared vision could emerge. The emphasis was on promoting a shift away from silo thinking and strengthening the relationships between key pillars to promote community sustainability.




### Building Models of Inclusion

What does it mean in the real world?

- ❖ Broadens opportunity;
- ❖ Brings new and novel approaches;
- ❖ Expands networks;
- ❖ Increases access to other skills;
- ❖ Greater grunt when seeking funds;
- ❖ Community focus;
- ❖ Greater clarity and understanding about your organisation, role and programs.

### Challenges of Escaping

- ❖ Learning new ways of communicating;
- ❖ Challenge your own world view;
- ❖ Build trust;
- ❖ Shared vision and goal;
- ❖ Pushing the boundaries;
- ❖ Take advantage of opportunities offered;
- ❖ Inclusive: **Equal Power Base**
- ❖ Negotiate



### Shared Vision Nurse Academy

- ❖ Support kids in aspiring to health careers
- ❖ Improve the long term health outcome of kids, with a focus on Indigenous kids – Education is critical
- ❖ Producing a potential workforce that is and will remain market driven for the next 25-30 years
- ❖ Strengthening relationships/shared ownership and responsibility for outcomes
- ❖ Parents/community play critical roles in shaping kids career aspirations

## **John Harris: Community Liaison at Maari Ma Aboriginal Health**

John expressed his appreciation of working with and learning from Aboriginal people in Broken Hill. He encouraged those present to think, not just of the Gaps that exist between Aboriginal and non-Aboriginal people, but of the lessons that can be learned from what is perhaps the longest striving culture on this planet – things like “urgency verses importance”, the importance of family, and our relationship to land, water and environment.

John works at the Maari Ma Aboriginal Health Service – an award winning health service that provides Primary Health Care for Aboriginal people in Broken Hill and mainstream outreach medical services for Broken Hill’s surrounding districts.

The organisation is involved with prevention and early intervention, seeking to incorporate community development as an important element in health service delivery. World research has identified the long term social determinates of health to include such things as education, housing and employment. Maari Ma seeks to address these causes through community development activities and sees a link between participation in various forms of art and the social and emotional well being of people. There is also a need for protecting the rights of Aboriginal arts and its marketing. An outline of the organisation’s strategic planning was given as well as an overview of the YEAH (Youth Excellence Arts and Health) performance program at Maari Ma.

## Naomi Waldron, Environmental Services, Broken Hill City Council

The presentation discussed Broken Hill City Council and Waste management and recycling activities, internationally, nationally and locally. A general overview of the city was described including its declining population due to the reduction of mining as well as its changing demographic, including a growing indigenous population. The discussion focused on councils desire to diversify local industry potential and gave recognition of the growth of the city's arts culture. The life cycle of rubbish from the shop to waste and the importance of its management were emphasized in relation to landfill. Within the existing quarry there is about eight years left and the site has life in excess of twenty – five years. The allowable landfill is calculated per head per population and the cost of sending waste to landfill is currently estimated at \$38 per cubic metre. Recycling and waste management is at the forefront of council's agenda, including the disposal of heavy metals, toxins, management of vermin and other concerns.

### Green Waste Collection

- **FREE** fortnightly collection service for residents
- Trial introduced in 2001 with 400 bio-bins
- Currently there are approx. 8,000 bio-bins



### GLASS:



### Broken Hill Waste Facility

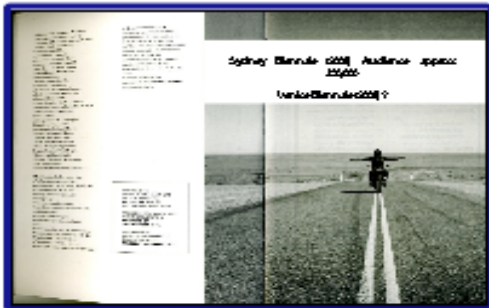
- Public waste and recycling facility
- Approx 73.7 ha
- Recycling shed
- Designated waste separation areas:
  - > domestic waste
  - > building waste
  - > green waste
  - > clinical and contaminated waste
  - > waste oil
  - > meat and bone



**Susan Thomas, Broken Hill Art Exchange Inc.**

The presentation gave an outline and background of the organization as a volunteer-based community service provider enabling the progress of art and artists. Examples were given with regard to the caliber of artists being attracted to Broken Hill through the organization. One of the artists profiled included Shaun Gladwell, a leading Australian performance video artist. This artist produced a major work for the Venice Biennale, the world's most prestigious art event, in Broken Hill during a residency at the Broken Hill Art Exchange Inc. Other work produced in Broken Hill by visiting artists is being exhibited at the TATE Modern, London and the breadth of community engagement between visiting artists, local artist, businesses and community groups through workshops and projects was shown. The premise of the talk was to highlight Broken Hill's opportunity to develop a creative industry focused around the concept of providing a large scale international artist residency located in Broken Hill. Comparisons were made between Broken Hill's mine buildings and a decommissioned coal mine transformed into an Art and Cultural Centre at the Rhur in Germany.

Susan Thomas, Broken Hill Art Exchange Inc.



Slide 9

10



Slide 10



Slide 13

14



Slide 14



18



## Katrina Gepp, Department of Primary Industry and Mineral resources

The presentation gave an overview of the scope of the Departments engagement with mining interests in Broken Hill. The DPI regulates the conditions with which mining titles are issued. The conditions include a requirement to submit a Mining Operations Plan (MOP) prior to the commencement of any operations and subsequent Annual Environmental Management Reports (AEMRs). Collectively the MOP and AEMR make up the Mining, Rehabilitation and Environmental Management Process (MREMP). The MREMP is the management tool for all operations within the mine and the means with which the DPI assesses environmental and rehabilitation performance. The MREMP is a basis for estimating rehabilitation requirements and the amount of the security bond required by the Department. The NSW DPI Mineral Resources monitors mine sites through inspections and audits to ensure compliance with title conditions. Images were displayed that showed examples of rehabilitated mine sites.



NSW DPI 1. Why Consider the Environment?	NSW DPI 2. Aims of the Derelict Mines Program (cont.)
<ul style="list-style-type: none"><li>■ Seems like a dumb question but...<ul style="list-style-type: none"><li>– Mining historically has a poor environmental reputation – derelict mines</li></ul></li><li>■ Need for sustainability</li><li>■ Need for mining to be a compatible <u>landuse</u></li><li>■ Need for Public acceptance</li></ul>	<ul style="list-style-type: none"><li>■ The aims of the Derelict Mines Program are to:<ul style="list-style-type: none"><li>– manage risks to public health and safety;</li><li>– stabilise sites;</li><li>– manage sources of contamination and address contaminant migration;</li><li>– remove features limiting beneficial reuse of the site and its surroundings;</li><li>– maintain or increase the biological diversity of species in the vicinity of the site;</li><li>– conserve items of heritage value; and</li><li>– improve the visual amenity of sites and their surroundings.</li></ul></li></ul>

## **Robert Sidford & John Harris: Health 1 Program**

Robert Sidford is the Business Development Manager for the NSW Department of State and Regional Development and John Harris is the Community Liaison for Maari Ma Health. John and Robert were speaking on behalf of Drs. Ros Menzies and Funmi Komolafe from Outback Women's Health and Family Practice Pty. Ltd. The doctors propose to expand their practice and in collaboration with John Harris are developing their strategies for expanding health services in Broken Hill. Following the release of the Far West Growth and Investment Strategy, Perilya Ltd expressed an interest in expanding health services for its employees and their families and this emphasised one of the main issues for attracting and retaining professional staff in Broken Hill, namely, the lack of available health services, including specialists and ancillary health professionals. Federal and state governments have developed the idea of establishing super clinics. This would focus on delivering specialty services through general practices as part of the NSW Government Integrated Primary and Community Health Policy. It is uncertain whether Broken Hill will obtain funding through the Health 1 program, but the aim is to co-locate doctors, dentists, and allied health professionals on one site. Health 1 aims to provide health care services in more remote areas, as well as contributing to the training of medical practitioners in consultation with the local Division of General Practice, the Greater Western Area Health Service, and other primary health services. It is also exploring ways to attract general practitioners to Broken Hill. The challenges of delivering health services include the aging population, increasing the availability of general practitioners, and attracting an increasing population to the region. Currently, in NSW the average ratio of general practitioners to population is 1:1200, but in Broken Hill it is 1:2000, with the added complication that many medical practitioners are aging. Public health services are seen as having a whole of community perspective not motivated by financial return, but Wagga was given an example of how the public and private sectors can work together for the benefit of the community. The presenters gave a description of the site for the proposed expanded practice (opposite the hospital) as well as an artist's drawing of the practice.



## **RESOURCES & COMMUNITY CONSULTATION**

The resources used at COMPASS to record the day included audio, visual and written material. The community consultation methods included:

- Completing a questionnaire
- Participating in a whiteboard brainstorming session (Appendix 1)
- Recording ideas on the back of name tags for a suggestion box, if they wished to be contactable.
- Providing written ideas/notes or feedback for the suggestion box if they wished to remain anonymous.
- Attendees were invited to attend two Community meeting sessions with the visiting delegates on Friday 19<sup>th</sup> February.
- A city Induction Tour of Broken Hill for delegates and meetings at various locations

## **COMPASS Forum: Dates/times/venues**

### Event Date/s

19<sup>th</sup> & 20<sup>th</sup> February 2009

### Times

Day 1: 8.45am to 3pm

Day 2: 10am – 6pm

### Venue/s

Day 1: Faculty of Rural Health (UNSW)

Day 2: City tour, Alma Hotel, BHAIE Inc – I.C Media Lab, Aboriginal Land Council, Australian Vermiculture

## COMPASS Forum Overview

### PART A

#### COMPASS FORUM – DAY 1

##### 1. Attendances

35 people attended

##### 2. Sector Attendances

TABLE 1: COMPASS FORUM DAY 1

<b>Attendees I.D. Number</b>	<b>Sector (Art, Health, Industry, Other)</b>
1	<i>Art/Health</i>
2	<i>Art/Health</i>
3	<i>Art/Health</i>
4	<i>Art</i>
5	<i>Art</i>
6	<i>Art</i>
7	<i>Art</i>
8	<i>Art</i>
9	<i>Art</i>
10	<i>Art</i>
11	<i>Art</i>
12	<i>Art</i>
13	<i>Art</i>
14	<i>Art</i>
15	<i>Art</i>
16	<i>Art</i>
17	<i>Health</i>
18	<i>Health</i>
19	<i>Health</i>
20	<i>Health</i>

21	<i>Health</i>			
22	<i>Health</i>			
23	<i>Health</i>			
24	<i>Industry</i>			
25	<i>Industry</i>			
26	<i>Industry</i>			
27	<i>Industry</i>			
28	<i>Industry</i>			
29	<i>Industry</i>			
30	<i>Other</i>			
31	<i>Other</i>			
32	<i>Other</i>			
33.	<i>Other</i>			
34	<i>Other</i>			
35	<i>Other</i>			
<b>TOTAL SECTOR ANALYSIS</b>				
<b>Art</b>	<b>Health</b>	<b>Industry</b>	<b>Other</b>	<b>Total</b>
16	9	6	6	35

The total attendance for the forum held on DAY 1 (table1) was 35 people and fifteen people attended the community meetings on DAY 2 (Part 2: table 2). Art was the highest level of attendance on DAY 1 with 16 participants, followed by Health with an attendance of 9. Following this was Industry and Other who had equal numbers of representatives with a total of 6 in attendance each.

One explanation for the higher attendance of Art in the sectors could be due to the Broken Hill Art Exchange being the key figure in the representation and organization of the forum.

To be noted was the correlation of the discipline of the Art and Health sectors, 3 of the 35 in attendance recognized both sectors for registration, this can be noted from the registration form.

### 3. Questionnaire Responses DAY 1

Eight Questionnaires were received in response to the COMPASS Forum. The breakdown of sectors is as follows:

Art	Health	Industry	Other	Total
5	2	0	1	8

Participants were asked how they perceived their tenure at Broken Hill. The results were as follows:

Short Term Resident	Long Term Resident	Lifetime Resident	Other	Total
0	4	3	1	8

#### 3.1 Please describe any common ideas/synergies between the different presentations, sectors and/or your own interests?

The responses about the follow sectors were:

##### Art:

1. 'David had a good presentation and the universal city WiFi is great'
2. 'Crossover of art, cultural and health GPS interaction and well being project could' (*this statement was not completed*).
3. 'Visual art with technology is moving ahead. Performing arts without technology is also important i.e., live performance'

Total responses = 3

Health:

1. 'Finding ways to empower patients through choices'
2. 'Essential to all forms of activity'
3. 'All respect to Rob Sidford but why was he talking about health?'

Total responses = 3

Industry:

1. 'Not well represented and there is more than one way to skin a cat'
2. 'Essential to the enjoyment of all things. Unfortunately there are diminishing leisure hours'

Total responses = 2

Collaborative responses:

Some participants responded by linking the three areas of Art, Health and Industry. These responses are as follows:

1. 'Changing landscape and its uses (*Art*), proposal i.e., new medical centre changes in the urban landscape i.e. residential, private houses (*Health*), rehabilitation of land/mining (*Industry*)'.
2. 'Possibility for art to be actively used to promote sustainable living or healthy lifestyle (*Art*)...to design fridge magnets [and] what can go into green bins (*Health/Industry*)'.

Total responses = 2

### 3. 2 COMPASS residencies

Participants were asked the following:

#### 3.2 a) How could the COMPASS residencies &/or projects presented support your ideas?

1. *'Don't know yet'*
2. *'Cross over meetings with the health profession and Arts organizations to further cultivate and proceed into developing the format to use'*
3. *'Conservation of local historic structures'*

Total responses = 3

#### 3.2 b) Participants were further asked if they would like to be contacted regarding the COMPASS residencies.

5 out of 8 participants responded stating that they would like to be contacted, 3 out of 8 did not respond.

### 3.3 Future development (Please note this section has been divided into part A & Part B for response)

3.3 a) Participants were asked if they were able to identify opportunities for future development in regards to four areas. These were either to their organization, other organizations, Broken Hill and the Global issue of sustainability. The responses were as follows:

Table 3: Opportunities for Future Development

Your Organization	Other Organizations	Broken Hill	Global Issues of sustainability	Other: Collaborative Response	Total Responses
2	3	4	3	2	= 15

Individual Responses:

To your organization:

1. *'Combine Arts re: recovering Mental Health/Therapy/ Digital GPS Games/Health Promotion'*
2. *'National Trust and Broken Hill Historical Society. Preservation and available funds'*

Total Responses = 2

To other organizations:

1. *'Combine Arts re: recovering Mental Health/Therapy/Digital GPS Games/Health Promotion'*.
2. *'Local, State and Federal Govts to be lobbied by all local bodies'*
3. *'Council/Histories: need to photograph annually (?), shops/street scenes to record changes over time'*

Total Responses = 3

To Broken Hill:

1. *'Combine Arts re: recovering Mental Health/Therapy/Digital GPS Games/Health Promotion...Promote Wellbeing'*
2. *'Digital technologies collaborative approach to health/educations etc'*
3. *'Encourage all locals to be involved – cure the apathy'*
4. *'Changing the use of main street shops etc, e.g. Centrelink [building was the old] Iceworks'*

Total Responses = 4

To the Global issues of sustainability:

1. *'Think Globally Act Locally'*
2. *'Broken Hill help to set as example, with others'*
3. *'Building Materials, interior design – images on walls, exterior design??'*

Total Responses = 3

Collaborative Responses:

Some participants responded by linking all the four areas; their organization, other organizations, to Broken Hill and the Global issues of sustainability. These responses were as follows:

1. *'Yes and Broken Hill overall would benefit from further exploration of issues brought forward from today's meeting'*
2. *'Actively using art to promote healthy lifestyles/sustainable living – (I see art especially the doing of it) as having huge potential to wean us as a culture off our sustainable consumerist lifestyle'*

Total Responses = 2

**3. 3 b) Participants were further asked 'what would further develop these opportunities' in regard to the four areas above.**

Responses were:

- 'Smaller focus groups to facilitate projects'*
- 'Encourage all communities to become active, both industrially and politically as well as art and health'*
- 'Reflects social cohesion of community'*

Total Responses = 3



### 3. 4 Participants were asked if they found COMPASS useful.

#### Was COMPASS Useful?

Yes	No	Other	Total
5	0	3	8

When asked to explain why, one of the five yes responses commented:

#### Yes response:

1. *'Triggered many ideas in my mind'*

Of the three responses comments were:

#### Other response:

1. *'Could have had better rep for industry, environmental education, but art and health was great'*
2. *'Very weighted on the Arts sector – where were the big hitters with money?'*
3. *'Half and half – will take time to think through everything need a bit of time to process ideas'*

### 3.5 Final Comments

Participants were asked, do you have any other thoughts, comments or suggestions you wish to share?

The responses were:

*'Loved it'*

*'Left some in the suggestion box'*

*'Not at this time'*

*'Very Inspiring'*

*'Spread the word, re: heath and meaningful employment in particular'*

*'I feel artists need to get their feet on the ground. Something that happens in Ruhr, Germany is not at all like isolated Broken Hill'*

#### **4. Summary**

Multiple styles of data collection were employed at the Forum to increase the potential for feedback, provide the options for anonymity and to gauge the most affective forms of data collection in the Broken Hill community. The forms of data collection employed included questionnaires, name cards, written responses and a mediated group Creative thinking/Brainstorming session recorded on a white board. The questionnaire was the least responsive form of community consultation with only 8 out of the 35 people responding. Of the 18 name cards returned only 7 respondents commented and 3 people submitted written responses. The group mediated Brainstorming session provided the most extensive feedback and the details of the community feedback received by each method of data collection are as follows:

##### 4.1 Questionnaire

Compared to attendance numbers the questionnaire was not a popular way to obtain feedback with participants. In total, approximately 35 people attended COMPASS and only 8 questionnaires were retrieved. A strong result was recorded for final comments (Questionnaire 3.5), with 7 out of 8 participants responding, one of which did not wish to comment, but on the whole the other 6 were solid responses either making suggestions for art or recognizing the success of COMPASS with statements such as 'very inspiring' and or stating the need to 'spread the word' in relation to health and employment.

Art was the strongest sector in attendance and half of participants who responded to the questionnaire identified with being a long term resident of Broken Hill. The responses reflect that the participants had an understanding of the underpinning concept of COMPASS in bridging the gaps of the three interdisciplinary approaches in Art, Health and Industry. Some links made were also with mental health, the building industry, land rehabilitation and the conservation of Broken Hill history.

## 4.2 Name Cards

Participants were asked to write any ideas and or thoughts on the back of their nametags to be handed in at the end of the forum. There were 18 name cards received from those who attended. Eleven of the eighteen name cards received did not have any written notes. Seven of the eighteen cards had information recorded on the back of the cards. Responses received stated:

(1). *'Is it known to school students that pathways exist for Arts students to the programs at Fowlers Gap, internationally and nationally at uni etc?'*

(2). *'In a way it felt like taking part in an ocean swim and realizing half way that some of them can't actually keep afloat...BUT other parts had food for thought and stuff that could be chewed over'.*

(3). *Youth Services – they are our future'.*

(4). a) *'We would love to learn more about traditional aboriginal land use/management in the Broken Hill area'.*

b) *'We would love to work with Broken Hill rubbish but what are the OHS ramifications (e.g. plastic bottles, glass bottles)'.*

c) *'Are environmental issues core to the development of Broken Hill?' ILIRI UNSW (COFA).*

(5). a) *Community Internet access – wifi?*

b) *Mervin Jarman – container-talk to me?*

c) *OZCO community partnerships project*

d) *Get Broken Hill to Venice*

e) *Get Broken Hill to Newcastle*

f) *Reality check on the viability of mine building*

(6). a) *Combine Art Growth/Projects to Mental Health: Bounce Back Group in Broken Hill?*

b) *Does the Chinese takeover of Perilya negate any community development plans of Perilya?*

c) *Broken Hill history combining reality, digital knowledge and historical photos (Social History – union struggles, hard times, strength and resilience of pioneers and workers, health issues of the day, love story?). HOLISTIC GAME ENRICH COMMUNITY.*

d) *Contact schools/alternative schools to be involved in arts/science/health*

(7). a) *Support local kids*

b) *Mental illness through Art - ? Fowlers Gap experience.*

c) *Potential: Having art (Indigenous and non-indigenous) participation*

- *MH Workers (Indigenous and non-indigenous) participation*
- *Elders*
- *Work through promoting your work small business (brings in industry)*

e) *Water Conservation Program: Darling River (indigenous and non-indigenous)*

f) *Silverton Wind farm: opportunity.*

#### 4.3 RESPONDENTS WRITTEN IDEAS

Participants were asked to write ideas to share for collation after the forum. From this, three responses were obtained, most of which give an extensive account of the participants thoughts/ideas. Please note that all the following information recorded is the exact written dialogue of the author.

4.3 a) Respondent I.D No: 27 wrote:

*'Why would you want artists in your community if as Susan Thomas says they're unemployed? You need people who will spend money in your community. Just because an artist is exhibited in the Sydney Biennale or the Venice Biennale doesn't guarantee a flow-on to Broken Hill. I have gone to many art galleries around the world, seen artist's work but haven't then considered where this work was done or inspired. When I was in Paris I did go out to Monet's garden at Giverny but it was comparatively close. And mostly you go to museums as they are well known (for the artists work that is kept there and this is unlikely to be any from BH).*

*Deb Jones mentioned 12 month projects but should be long term-other short term disappoints community. What about the staff employed – they too want certainty, some*

*Collaboration of Information: Compass Forum. Broken Hill Art Exchange 11<sup>th</sup> March 2008.*

*tenure especially to come to remote areas. It still amazes me that so many jobs are short-term contracts. Even if offer a permanent position it doesn't mean you'll be stuck with them forever and perhaps you'll get better applicants.*

*Education is a key as Deb said – why aren't they there? It's not just Indigenous but non-Indigenous as I don't think BH has an intellectual past or history of wanting to be educated (too many easy unskilled jobs down the mine).'*

4.3 b) Respondent I.D no: 20 wrote:

*Arts projects (preferably involving community, kids etc) about recycling and waste management to encourage people to live more sustainability:*

- video*
- (uncertain of this example due to writer's hand)*
- story/poem/sing*
- performance*

*Any approach – the cool things you can make with recycled.*

- the joys of sustainable living*
- horror movie/story/comedy*

*Arts projects promoting sustainable living.*

*Sustainable living needs to:*

- 1. be easier*
- 2. cheaper than non-sustainable living*
- 3. Socially acceptable? (Uncertain of writer's hand)*

- health/environment/industry/arts collaborations*

*There have been lots of pressures pushing us towards consumerist lifestyle, need active approval to turn it around*

*Industry/Art collaboration to promote locally sustainable living:*

*Minimizing food transport*

*What can we grow locally*

*Arts project:*

*Design fridge magnets about what can go in green bin*

*Distribute to all households’.*

4.3 c) Anonymous Respondent wrote:

*‘D/Lux – creation of an interactive game for GPS in B/Hill history*

*Target exercise groups – group interaction*

*Indigenous*

*-stress test*

*-cardiac rehab program*

*- Obesity’*

#### 4.4 Group Creative Thinking/Brainstorming Session

Participants were asked to discuss ideas and or thoughts for the day in a group session as a sum up of the forum.

The discussion was recorded in dot form on a whiteboard and broken up into three sections. These sections were ideas, opportunities and issues. The results were recorded as follows:

##### Ideas

- *GPS/Technology Projects with relevance to Health/Education and Art.*
- *Merging Mental Health Programs with Art Programs: more structured partnerships*
- *University Pathways via High School*
- *Research Link between Speech Pathology (young kids) and Mental Health (teens):  
Visual Arts as an intervention.*

## Opportunities

- *Mine Rehabilitation can be driven by the community*
- *Alternative energy development/projects*
- *Create art space from mine assets*
- *Rehabilitate Human Assets?*
- *To what stage do you rehabilitate to?*
- *Changing cultural and landscape from the outside etc*
- *New management of mine may want to influence*
- *Broken Hill City Council Assets: civic contract?*
- *Trade Start programs – to engage kids in danger ('at risk') in learning, skills, art.*

## Issues

- *OHS/Legislation: Government regulations for Development/Roadblocks*
- *Loosing past cultural assets*
- *Delivering what kids and others actually want/need.*
- *Understanding culture of various groups in community*
- *Mining assets for community (audit): what's an asset and what's a liability?*
- *Government needs to improve how they support people*
- *Cost of alternative energy equipment*

## PART B: COMPASS FORUM

### 1. Community Meetings

The itinerary consisted of meetings and tours. There were two Community Meetings, the first at the BHAE Media Lab/Res. and the other at the Alma Hotel. Other meetings were held at Australian Vermiculture and the Aboriginal Land Council and a City Induction Tour was also arranged. The itinerary allowed for further discussions between the visiting delegates and the Broken Hill community.

### 2. Itinerary and Attendances

TABLE 2: COMMUNITY MEETINGS DAY 2

Friday 19 <sup>th</sup> February	Local	Visiting	Total people
<b>10am – 12pm</b>	<i>Community Meeting: I.C.</i> Media Lab.Res Susan Thomas, (BHAE Inc), Marianne Van Dyke (Business Broken Hill), Deb Jones & Cathy Naden (Syd. Uni Dept Rural & Remote Health)	Bonita Ely & Kathy Yeh (UNSW, COFA), David Cranswick (d/Lux MediaArts)	7
<b>1.30 – 2.15</b>	City Induction Tour		6
<b>2.15 – 3.15</b>	Australian Vermiculture		7
<b>3.15 – 4.30pm</b>	Aboriginal Land Council		7
<b>4.45 – 6.16</b>	<i>Community Meeting: Alma</i> Hotel Artists, Representative from Darling River Action Group & BHAE Inc. members		15



TABLE 3: EXTRACT OF MINUTES - COMMUNITY MEETING 10 -12pm

<p>EVALUATION OF COMPASS FORUM (IDENTIFYING POSITIVES &amp; NEGATIVES)</p> <p>The key themes arising at the COMPASS FORUM</p>
<p>(a) Opportunities for Youth/Mental Health</p> <p>(b) IT – How technologies can support communities/communications “Code the Themes”</p> <p>(c) Creating Education Pathways</p> <p>(d) Broken Hill Becoming a Learning centre</p> <p>(e) Sinicism’s/observations: Questions about what is likely to happen regarding Perilya’s merger with the Chinese Company and the necessity of putting comments into appropriate cultural contexts (cultural inappropriateness).</p>

### 3. Activities

#### a) Community Sessions

The two community meeting sessions were held on the Friday from 10 -12pm (BHAE Inc, I.C. Media Lab/Res.) and 4-6pm (Alma Hotel). The morning meeting included Broken Hill Art Exchange Inc, Sydney delegates (excluding Elisabeth Burke who departed on bereavement leave) and Marianne Van Dyke from Business Broken Hill. This was to discuss the outcomes and potential of COMPASS from the perspective of the visitors and in relation to larger business and industry perspectives (Local Delegates with Broken Hill Business - Meeting Minutes: Appendix 2). The afternoon was less formal group gathering of interested artists and community members at the Alma Hotel, approximately 15 people attended.

#### b) Other Sessions

The other meetings conducted throughout the day between the visiting delegates and the broader community of Broken Hill included:

- Craig Murkins in charge of Business Development from a local Environmental business initiative, Australian Vermiculture, with its links to providing green waste services to Broken Hill City Council and Perilya Mine.

- The Aboriginal Land Council: Maureen O'Donnell from the Baakandji Nation to gain greater insight into the local indigenous issues and indigenous peoples of the area to discuss the potential links/opportunities of the COMPASS initiative. This meeting uncovered entrenched differing social stresses particular to the region and the need for greater consultation and involvement with and by the Indigenous community prior to all public events concerning the future planning for the city of Broken Hill.

c) City Induction Tour

The visiting delegates were also taken on the University Dept of Rural & Remote Health's Induction tour of Broken Hill. This tour introduces Medical professionals to the local culture of the city and its citizens to assist with their integration. It provided an overview of the different health facilities, a social/cultural history and orientation to the city.

## **PART C: FINAL SUMMARY, OUTCOMES and RECOMMENDATIONS**

### Final Summary

Overall the COMPASS Forum was well attended by the Broken Hill community as a whole, with the exception of industry. The Forum showed that the community of Broken Hill is interested in the subject of COMPASS and many saw it as useful to developing the city's future sustainability. The Forum showed that expertise is attracted to the city, as is commonly thought otherwise, and that industry professionals want to conduct projects and develop local partnerships. COMPASS also showed that bringing different community's together can attract funding to the city and increases the working relationships and engagement between different sectors.

The GPS/Technology Projects was perceived as having applications across all sectors and the arts were seen as an avenue to increasing health aspects in communities. The opportunities were that the community considered itself an asset and the notion of developing a 'civic contract' through the Broken Hill City Council emerged. The community acknowledged its ability to engage socially and practically including recognizing the legacies of mining as both an asset and liability. Governance and regulatory issues were seen as important to empowering community's and parallel to issues including occupational health and safety, cultural assets, alternative energies, new technologies and addressing the needs of different groups and cultures. The Forum showed that within the different sectors new partnerships are developing with the potential to increase educational opportunities and access to contemporary thought and practices. It also demonstrated that many different communities are interested in issues of sustainability with the focus on adopting new technologies and developing partnerships to preserve, recognize, utilize and create new cultural assets.

## Outcomes

The total combined attendance for the COMPASS Forum on day 1 and Day 2 was 50 people. The outcomes so far include: greater engagement between art and health organizations, a new course having been initiated by the university of NSW, COFA in Broken Hill and the awarding of an Arts NSW funding application to host 15-18 visiting experts from the Art, Health, Education and industry sectors to Broken Hill.

Since the COMPASS Forum the art exchange has conducted health & art programs for a disability group with ten local photographers employed to deliver programs. The art exchange also conducted a video production workshop during the school holidays with high school students for a combined project with health. This project enabled the employment of a video artist in Broken Hill. In addition a Multi Arts program was initiated with a health service. This program supports Carers of people with disabilities and is providing employment for four local artists.

The new Environmental Course written by the UNSW is building a greater relationship between the university's research facility at Fowlers Gap and the city of Broken Hill. The course is available for up to twenty-five students across all facilities and two courses are scheduled for 2009. The course enables students to learn about the city and to develop future research and practical projects focused on issues relating to arid zone regions (i.e. water/land management). It fosters collaboration between different schools of education including engineering, landscape architecture, art and science. This initiative supports the local economy of Broken Hill by utilizing accommodation service providers, consultants, hire cars, cafes and caterers.

## Recommendations

- All public meetings be mediated with a group brainstorming session included.
- A combined public Forum become an annual event, to support public engagement and the continuance of inter sector collaborations
- A coordinating body be established to continue and record public meetings of this type
- That documentation about public forums be available to the public via the Broken Hill City Council Library and on council websites.
- Industry (mining, energy companies and funding agencies) be encouraged to participate and attend.
- That this document receives written consent by the participants prior to publication in any format.
- Given the amount of interest shown by the different sectors regarding the applications for the technology. This report recommends that d/lux Media Arts be engaged to develop an inter sector GPS project.
- That Indigenous organizations have greater engagement with this project

## **Acknowledgements**

The COMPASS Forum was funded by the Broken Hill Community Foundation. The Broken Hill Art Exchange Inc. was involved with project initiation, management and reporting. The steering committee and local partners of the AHI (Art, Health, Industry) group included Sydney University Department of Rural Remote Health – Deb Jones and Kathy Naden, John Harris, Maari Ma Aboriginal Health Corporation - Community Liaison, Louise Denley (Researcher), Sandi James Carers NSW & President BHAIE Inc., Susan Thomas, Creative Consultant Broken Hill Art Exchange Inc. and Des Bilske Community and Governance – Broken Hill City Council. Thank you to Scott Howe for overseeing proceedings. This report was written by Katrina Groves and Susan Thomas, BHAIE Inc.